

Plate 3

- Fig. 1. *Bythoceratina sudjaponica* Zhou, 1995  
Lateral view of left valve, EPSM-AR213,  $\times 112$ , St. 3
- Fig. 2. *Bythocythere ishizakii* Yajime, 1987  
Lateral view of left valve, EPSM-AR214,  $\times 102$ , St. 3
- Fig. 3. *Bythocythere maisakensis* Ikeya and Hanai, 1982  
Lateral view of right valve, EPSM-AR215,  $\times 130$ , St. 26
- Fig. 4. *Callistocythere alata* Hanai, 1957  
Lateral view of right valve, EPSM-AR216,  $\times 137$ , St. 8
- Fig. 5. *Callistocythere pumile* Hanai, 1957  
Lateral view of left valve, EPSM-AR217,  $\times 142$ , S 2
- Fig. 6. *Callistocythere tateyamaensis* Frydl, 1982  
Lateral view of left valve, EPSM-AR218,  $\times 135$ , St. 7
- Fig. 7. *Callistocythere undulatifacialis* Hanai, 1957  
Lateral view of right valve, EPSM-AR219,  $\times 120$ , St. 8
- Fig. 8. *Celtia* sp.  
Lateral view of juvenile right valve, EPSM-AR220,  $\times 121$ , St. 7
- Figs. 9a,b. *Cletocythereis* sp.  
9a. Lateral view of juvenile left valve, EPSM-AR221,  $\times 107$ , St. 26  
9a. Inner view of juvenile left valve of the same individual,  $\times 107$

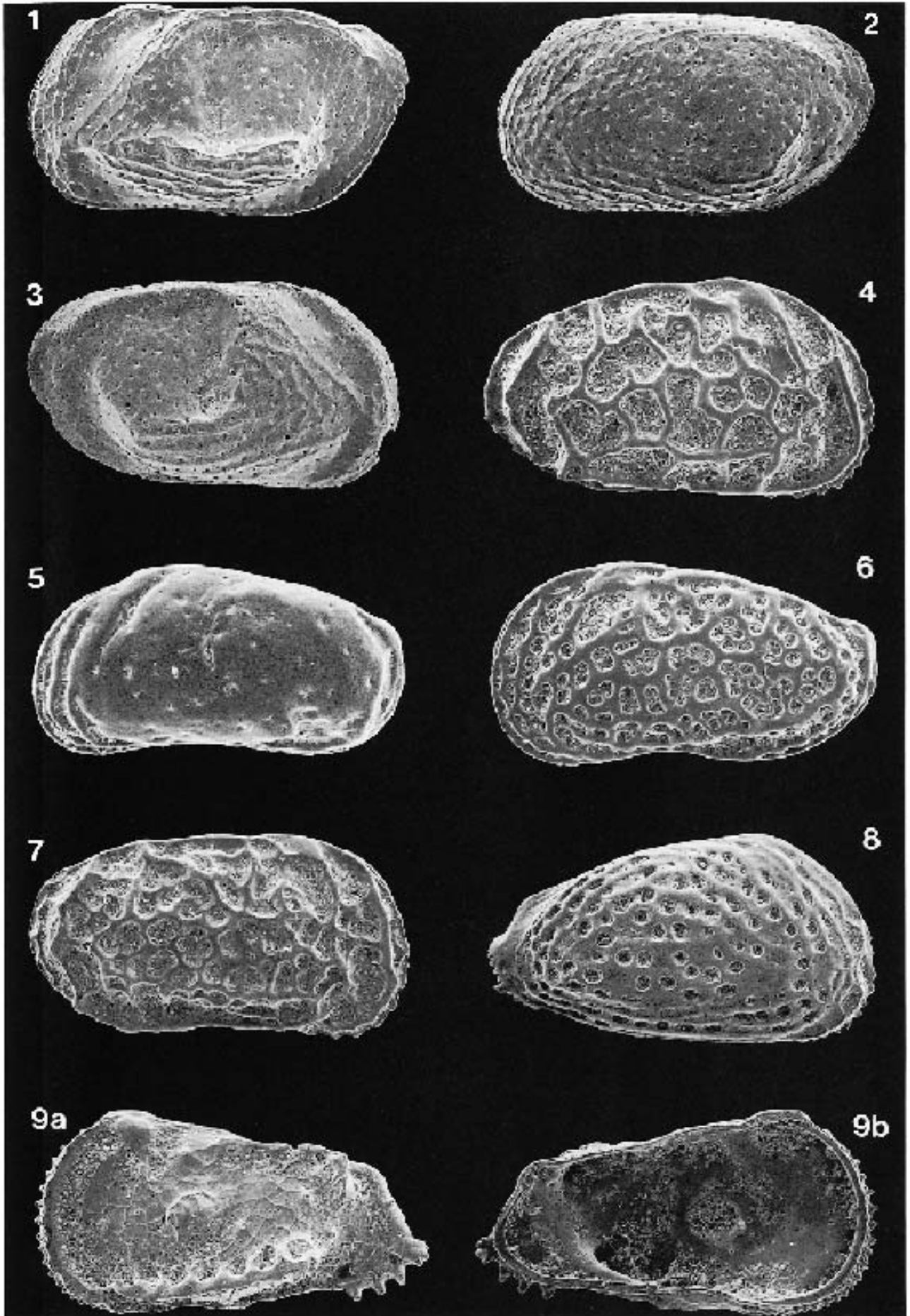


Plate 4

- Fig. 1. *Coquimba ishizakii* Yajima, 1978  
Lateral view of right valve, EPSM-AR222,  $\times 120$ , St. 9
- Fig. 2. *Coquimba* sp.  
Lateral view of right valve, EPSM-AR223,  $\times 133$ , S 2
- Fig. 3. *Cornucoquimba tosaensis* (Ishizaki, 1968)  
Lateral view of right valve, EPSM-AR224,  $\times 115$ , St. 26
- Fig. 4. *Cythere nishinipponica* Okubo, 1976  
Lateral view of right valve, EPSM-AR225,  $\times 106$ , KO. 3
- Fig. 5. *Cythere omotenipponica* Hanai, 1959  
Lateral view of right valve, EPSM-AR226,  $\times 100$ , St. 6
- Fig. 6. *Cytheromorpha acupunctata* (Brady, 1880)  
Lateral view of right valve, EPSM-AR227,  $\times 107$ , St. 14
- Fig. 7. *Cytheropteron miurense* Hanai, 1957  
Lateral view of left valve, EPSM-AR228,  $\times 172$ , St. 10
- Figs. 8a-c. *Cytherura ct.daishakaensis* (Tabuki, 1986)  
8a. Lateral view of right valve, EPSM-AR229,  $\times 137$ , S 2  
8b. Lateral view of left valve, EPSM-AR230,  $\times 137$ , S 2  
8c. Inner view of left valve of the same individual,  $\times 137$

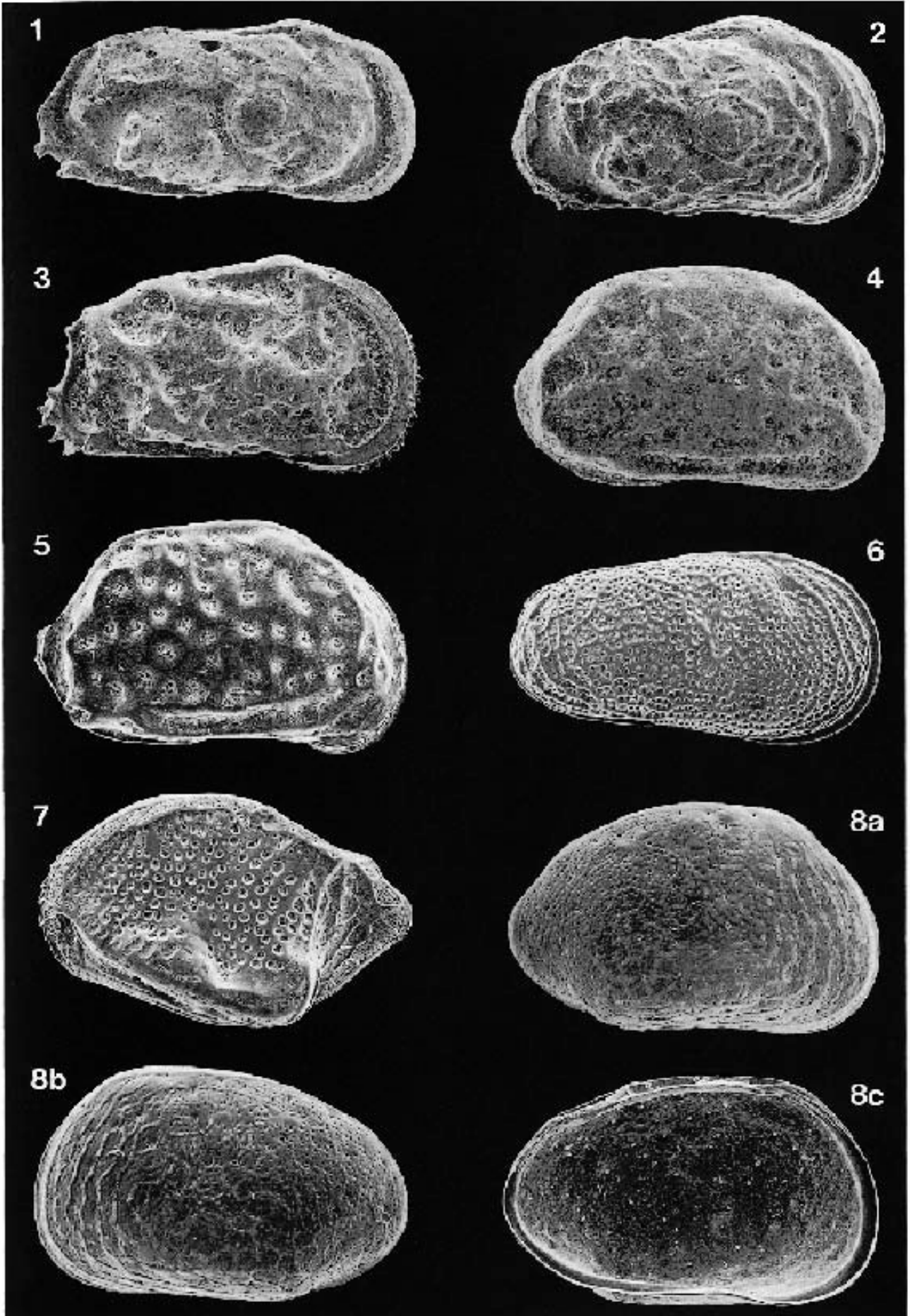


Plate 5

- Fig. 1. *Eucythere yugao* Yajime, 1982  
Lateral view of left valve, EPSM-AR231,  $\times 127$ , St. 7
- Fig. 2. *Finmarchinella japonica* (Ishizaki, 1966)  
Lateral view of right valve, EPSM-AR232,  $\times 152$ , St. 8
- Fig. 3. *Finmarchinella uranipponica* Ishizaki, 1969  
Lateral view of left valve, EPSM-AR233,  $\times 121$ , St. 3
- Fig. 4. *Hanaiborchella miurensis* (Hanai, 1970)  
Lateral view of left valve, EPSM-AR234,  $\times 145$ , St. 26
- Fig. 5. *Hanaiborchella triangularis* (Hanai, 1970)  
Lateral view of left valve, EPSM-AR235,  $\times 165$ , St. 3
- Fig. 6. *Hemicytherura cuneata* (Hanai, 1957)  
Lateral view of right valve, EPSM-AR236,  $\times 187$ , St. 44
- Fig. 7. *Hemicytherura tricarinata* Hanai, 1957  
Lateral view of right valve, EPSM-AR237,  $\times 177$ , KO 3
- Fig. 8. *Kobayashiina hyalinosa* Hanai, 1957  
Lateral view of left valve, EPSM-AR238,  $\times 130$ , St. 43
- Fig. 9. *Krithe japonica* Ishizaki, 1971  
Lateral view of female left valve, EPSM-AR239,  $\times 125$ , St. 25
- Fig. 10. *Loxoconcha epeterseni* Ishizaki, 1981  
Lateral view of left valve, EPSM-AR240,  $\times 137$ , St. 3

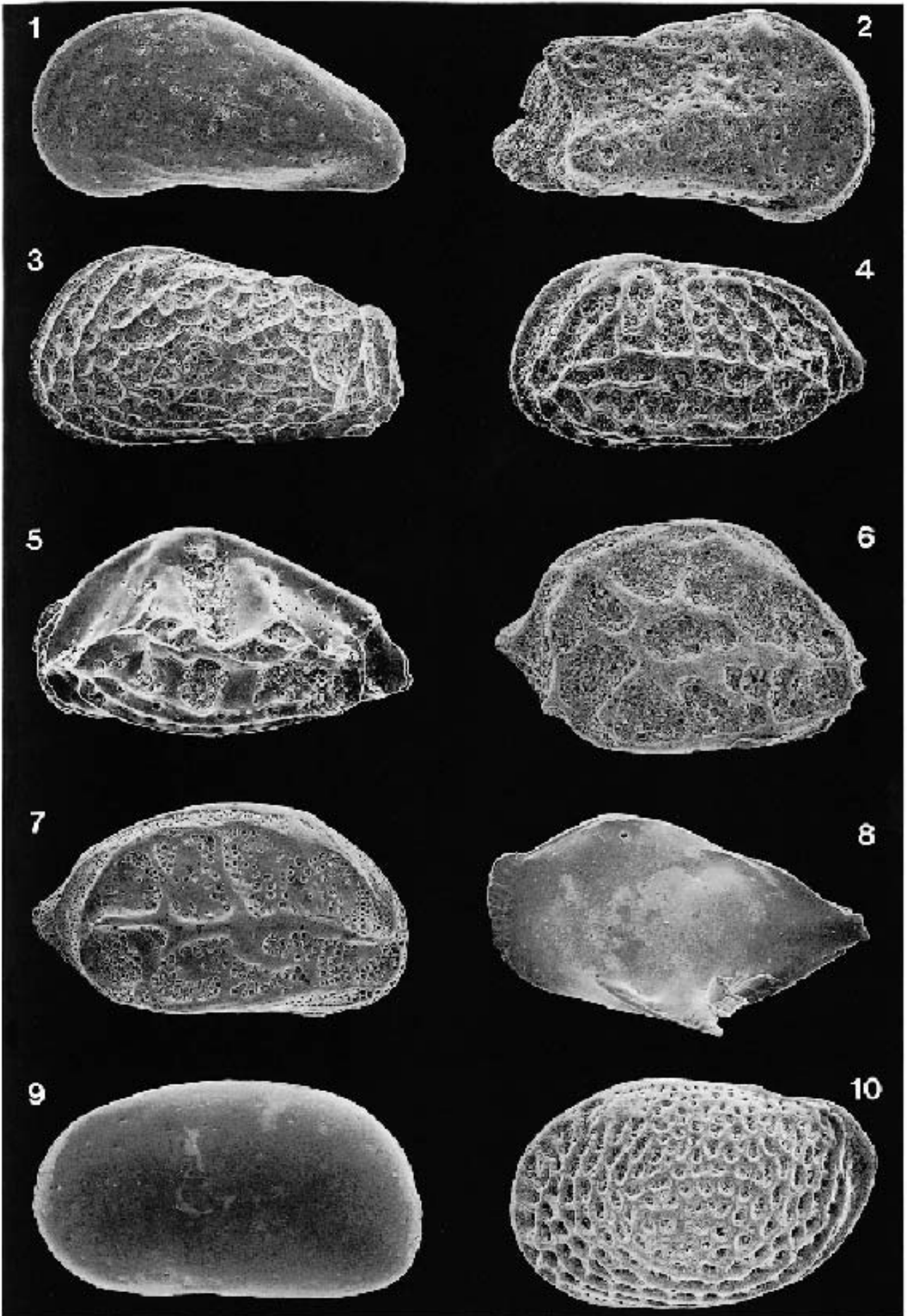


Plate 6

- Fig. 1. *Loxoconcha harimensis* Okubo, 1980  
Lateral view of right valve, EPSM-AR241,  $\times 137$ , St. 7
- Fig. 2. *Loxoconcha japonica* Ishizaki, 1968  
Lateral view of right valve, EPSM-AR242,  $\times 111$ , St. 3
- Fig. 3. *Loxoconcha Kattoi* Ishizaki, 1968  
Lateral view of left valve, EPSM-AR243,  $\times 128$ , St. 3
- Figs. 4a-c. *Loxoconcha ocellata* Hou, 1982  
4a. Lateral view of female left valve, EPSM-AR244,  $\times 111$ , KM 1  
4b. Lateral view of male left valve, EPSM-AR245,  $\times 108$ , KM 1  
4c. Lateral view of juvenile right valve, EPSM-AR246,  $\times 147$ , KM 1
- Fig. 5. *Loxoconcha pulchra* Ishizaki, 1968  
Lateral view of female left valve, EPSM-AR247,  $\times 121$ , S 2
- Fig. 6. *Loxoconcha tosaensis* Ishizaki, 1968  
Lateral view of male left valve, EPSM-AR248,  $\times 112$ , St. 2
- Fig. 7. *Loxoconcha uranouchiensis* Ishizaki, 1968  
Lateral view of right valve, EPSM-AR249,  $\times 150$ , St. 26
- Fig. 8. *Loxoconcha viva* Ishizaki, 1968  
Lateral view of left valve, EPSM-AR250,  $\times 118$ , St. 8



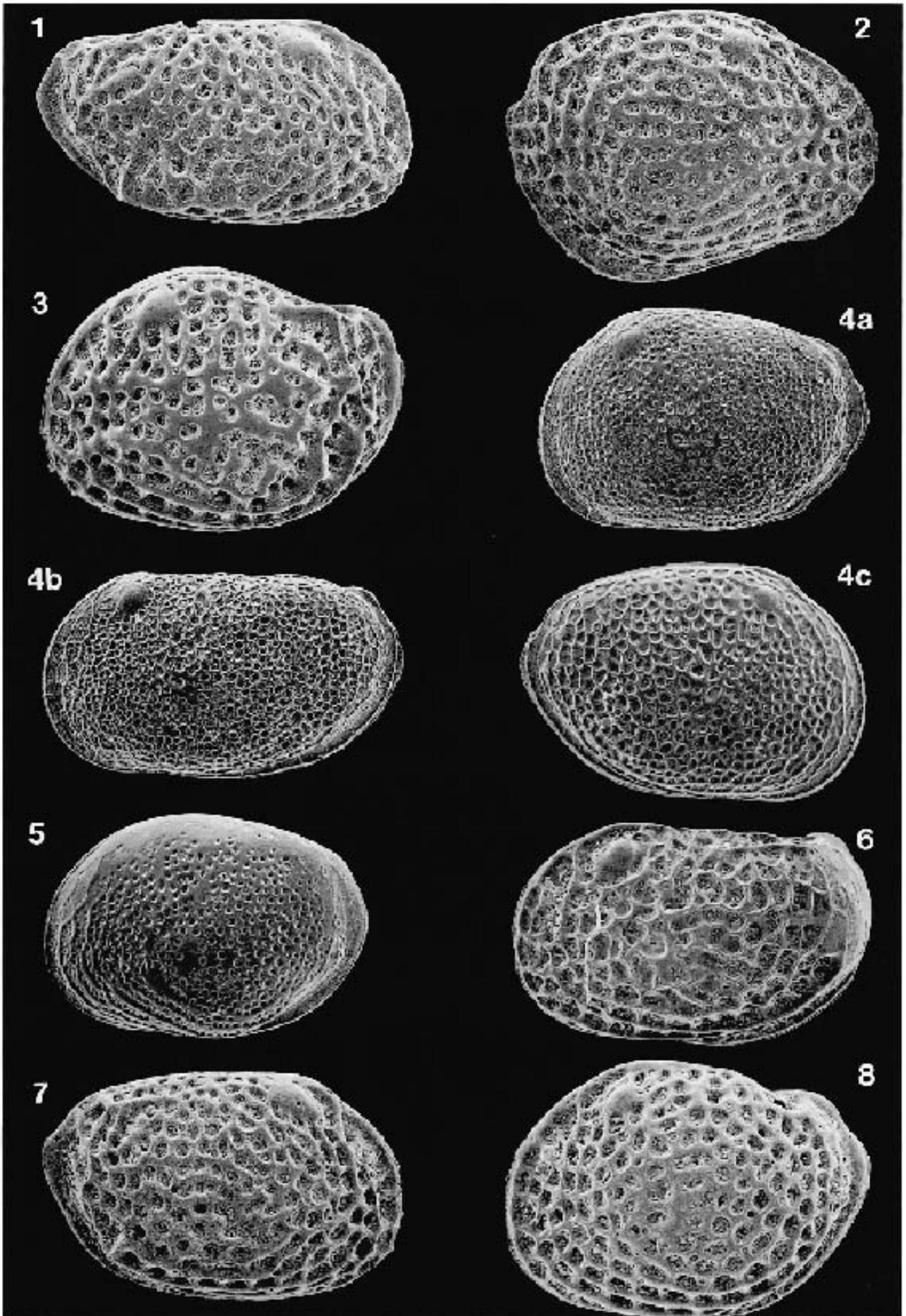


Plate 7

Figs. 1a, b. *Loxococoncha* sp. 1

- 1a. Lateral view of left valve, EPSM-AR251,  $\times 127$ , KM 1
- 1b. Inner view of left valve of the same individual,  $\times 127$

Figs. 2a, b. *Loxococoncha* sp. 2

- 2a. Lateral view of right valve, EPSM-AR252,  $\times 145$ , St. 9
- 2b. Inner view of right valve of the same individual,  $\times 145$

Fig. 3. *Loxocorniculum mutsuensis* Ishizaki, 1971

- Lateral view of left valve, EPSM-AR253,  $\times 135$ , St. 44

Figs. 4a, b. *Microcythere* sp.

- 4a. Lateral view of left valve, EPSM-AR254,  $\times 227$ , St10
- 4b. Inner view of left valve of the same individual,  $\times 227$

Fig. 5. *Moosella tomokoae* (Ishizaki, 1968)

- Lateral view of right valve, EPSM-AR255,  $\times 98$ , KO 3

Fig. 6. *Munseyella japonica* (Hanai, 1957)

- Lateral view of left valve, EPSM-AR256,  $\times 162$ , St. 7

Fig. 7. *Munseyella oborozukiyo* Yajima, 1982

- Lateral view of right valve, EPSM-AR257,  $\times 160$ , St. 26